



RWF BRON

GET ON TRACK GET BRON BRON Rubber Track Undercarriage



STANDARD FEATURES

- Track-type Undercarriage
- Oscillating Track Frames
- Heavy Duty Fabricated Steel Track Frames
- Sealed Bearings

BRON Rubber Track Undercarriages improve floatation and provide a smooth ride in soft, uneven ground conditions. The wide track and low ground pressure reduce soil compaction with less field rutting. They are ideal for agricultural and industrial pull-type equipment, such as Grain Buggies, Dump Trailers, Seeders, Sprayers, Manure Tanks and Pipe Carriers.

BRON RTU's are available in 20-40 ton capacities

*Please Call For a
List Of Our Used Equipment
Or Check Out Our Web Site
To See Our Complete Product Line*



RWF BRON

RWF Industries: www.rwfbron.com

A division of Roberts Welding and Fabricating Ltd.

873 Devonshire Avenue, Woodstock, ON, Canada, N4S 8Z4

Phone: 519-421-0036

Toll Free: 1-800-263-1060

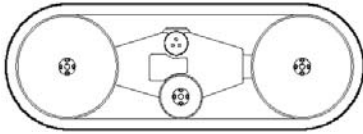
Fax: 519-421-0028

Email: info@rwfbron.com

Ontario Dealer Contact: Kevin Paton @ Paton Farms Ltd. Cell: (519)808-0272 Fax.: (519)485-3575

BRON RUBBER TRACK UNDERCARRIAGES

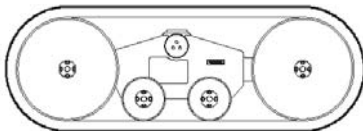
BRON RTU 20



Specifications:
Gross Vehicle Wt: 40,000lbs
Height: 36 in.
Length: 104in.

Standard Features:
 -Oscillating Track Frames
 -Heat-treated Pins & Bushings
 -120 in. C. to C. Axle
Optional Extras:
 -30in. Quadtrack Belts-Old Style

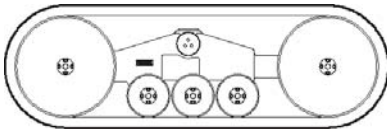
BRON RTU 25



Specifications:
Gross Vehicle Wt: 50,000lbs
Height: 36in.
Length: 104in.

Standard Features:
 -Oscillating Track Frames
 -Heat-treated Pins & Bushings
 -120 in. C. to C. Axle
Optional Extras:
 -30in. Quadtrack Belts- Old Style

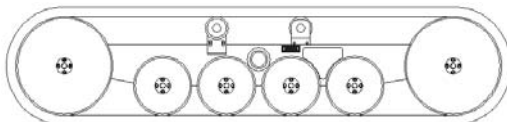
BRON RTU 30 ST



Specifications:
Gross Vehicle Wt: 60,000lbs
Height: 36in.
Length: 114in.

Standard Features:
 -Oscillating Track Frames
 -Heat-treated Pins & Bushings
 -120 in. C. to C. Axle
Optional Extras:
 -30in. Quadtrack Belts- STX Only

BRON RTU 40



Specifications:
Gross Vehicle Wt: 80,000lbs
Height: 36in.
Length: 156.5in.

Standard Features:
 -Oscillating Track Frames
 -Heat-treated Pins & Bushings
 -Carrier roller (top) 2
 -126 in. C. to C. Axle
Optional Extras:
 -24in. Caterpillar Belts
 -30in. Caterpillar Belts
 -Optional Axles Extra

***OPTIONAL USED RUBBER BELTS BASED ON AVAILABILITY**